

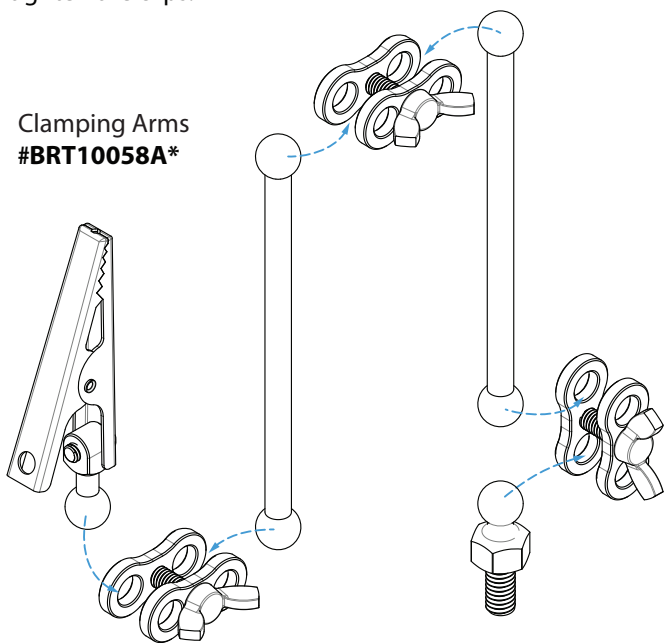
Multifunctional Soldering Jig #BRT10058

Difficulty Level: ★☆☆☆☆

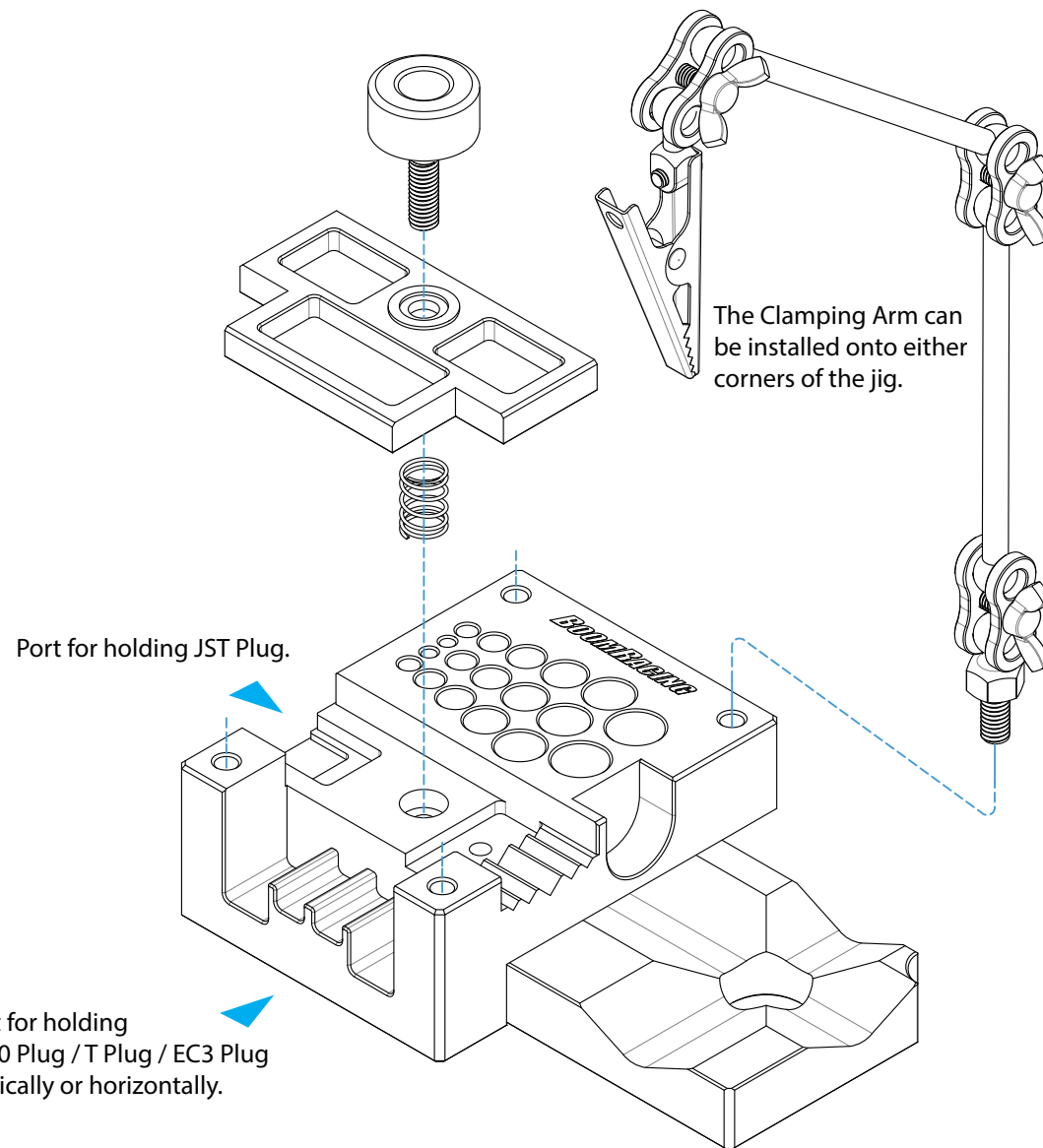
INSTALLATION MANUAL

To assemble the clamping arm, loosen each pair of butterfly clips without disassembling them. Insert the ball joints as shown in the diagram, then tighten the clips.

Clamping Arms
#BRT10058A*



*Additional clamping arms available as option.



The drawer with V-groove is for the motor to steadily sit in different orientations.